



## Ball Plungers

Build Your Own

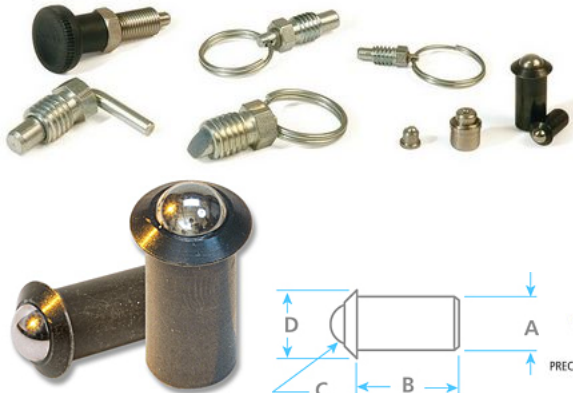
Download PDF

Non-threaded Ball Plunger design push-fits into hole. Spring loaded ball detent forms a bearing surface which retracts and then snaps into opposing hole or groove. Push fit Ball Plungers are used for locating or positioning in drawers, doors, dies and other fixtures. Also known as Ball Detents, Spring Loaded Plungers and Spring Plungers.

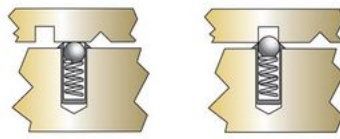
Specials available in a variety of sizes, materials and finishes. Stock sizes are low carbon steel, black oxide finish.

Design a Pull or Ball Plunger made to your exact specifications! We offer free engineering assistance and samples!

- Special size
- Special body shapes
- Different material/finish
- Higher/lower compression force
- More!

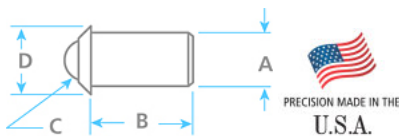


### BALL PLUNGER DEMO



Install Ball Plunger into push-fit hole in material. Spring loaded ball automatically depresses to allow adjustments.

Spring loaded ball then snaps back into the desired hole, groove or indentation.



Our Exclusive Fastener Innovations ▶

Need a Custom Solution? Learn More ▶



### CATEGORY BROWSE

Home > Pins, Cotter, Rings > Ball Plungers

- Home
- Pins, Cotter, Rings
- Ball Plungers**

### NARROW RESULTS

Search within these results

#### Size [in]

- 1/4 (1)
- 3/8 (1)

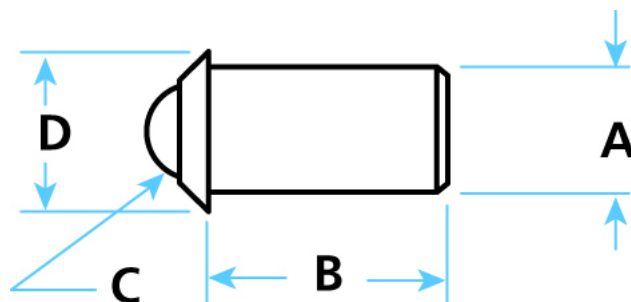
#### A [in]

- .250 (1)
- .375 (1)

#### B [in]

- 0.471 (1)
- 0.786 (1)

## Ball Plungers



1-2 of 2 Products



Sort by:

Compare

- ▼ C [in]
- 0.187 (1)
- 0.313 (1)

- ▼ Approximate End Force - Initial [lb]
- 3 (1)
- 5 (1)

Power Grid Search

### BP4-471

Compare



**A [in]:** .250  
**D [in]:** 0.312  
**List Price:** \$2.49

**Approximate End Force - Final [lb]:** 7

**B [in]:** 0.471  
**Material:** Low Carbon Steel  
**Approximate Weight/Pounds per 100 Pieces:** 0.56  
**Size [in]:** 1/4

**C [in]:** 0.187  
**Finish:** Black Oxide  
**Approximate End Force - Initial [lb]:** 3

### BP6-786

Compare



**A [in]:** .375  
**D [in]:** 0.500  
**List Price:** \$2.58

**Approximate End Force - Final [lb]:** 14

**B [in]:** 0.786  
**Material:** Low Carbon Steel  
**Approximate Weight/Pounds per 100 Pieces:** 1.69  
**Size [in]:** 3/8

**C [in]:** 0.313  
**Finish:** Black Oxide  
**Approximate End Force - Initial [lb]:** 5

## CONTACT US

Pivot Point Inc.  
 761 Industrial Lane  
 PO BOX 488  
 Hustisford, WI 53034  
 Toll Free (800) 222-2231  
 Ph (920) 349-3251  
 Fax (920) 349-3253

## INDUSTRIES SERVED

Military & Defense  
 Aerospace  
 Agricultural  
 Machine building  
 Automation  
 Transportation  
 Material Handling  
 Medical  
 Consumer Products  
 & MORE!

## DISTRIBUTORS

WE ARE SEEKING  
 WORLDWIDE DISTRIBUTORS

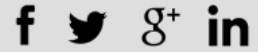
For AUS/NZ Customers



For UK Customers



## GET SOCIAL



## ABOUT US

ISO CERTIFIED  
 Version 9001:2008  
 Certificate # C0236776-ISI