

## Ball Lock Pins (Standard Style)

- Build Your Own
- Download PDF
- Request Information / Quote

Ball Lock Pins are a very secure quick-release pin. They have a push button that initiates ball action and retraction, and can only be released by pushing the button. Ball Lock Pin design combines secure fastening with quick release ease of removal. [Steel Lanyards](#) or [Nylon Lanyards](#) may be added as a low cost tether to prevent loss

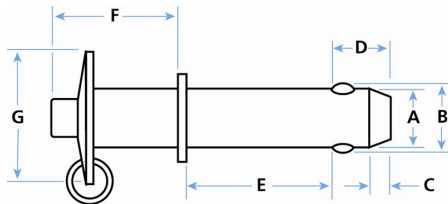
Our "Standard Style" is a simplified version that is less expensive than others and gets the job done. Ball Lock Pins are also available in [T-Handle Version](#) and [Key Locking Version](#) for extra security!

Pivot Point's Ball Lock Pin design features both a one-piece, cold formed body and one-piece spindle for increased durability.

Ball lock pins are also known as positive lock pins, ball pins, double ball detent pins, push button pins, quick release pins, quick pins and hitch pins.

Stocked in heat treated alloy steel for strength and durability. Standard finish is Zinc with yellow Chromate. Other finishes available.

### NEW! Added Security Options



**PRODUCT FEATURES**

- One-Piece Push Button/Spindle
- Zinc/Yellow Chromate Finish for Corrosion Resistance
- 440C Stainless Steel Balls Hardened to Rc 58-62
- One-Piece, Cold Formed Head/Body - Alloy Steel Heat Treated
- Heavy-Duty Retaining Ring for Stop Collar

For Features DESIGN INNOVATION

HIGH QUALITY COMMERCIAL EQUIVALENT!

### CATEGORY BROWSE

- Home
- Pins, Cotter, Rings
- Ball Lock Pins
- Standard Ball Lock Pins**

Home > Pins, Cotter, Rings > Ball Lock Pins > Standard Ball Lock Pins

## Standard Ball Lock Pins

1-28 of 28 Products



Sort by:

Compare

NARROW RESULTS

Product Basic Shank Diameter [in] Effective Length - E [in]

▼ **Basic Shank Diameter [in]**

1/4 (6)

5/16 (6)

3/8 (8)

1/2 (8)

---

▼ **Effective Length - E [in]**

1/2 (1)

3/4 (1)

1 (4)

1 1/4 (3)

1 1/2 (4)

1 3/4 (3)

2 (3)

2 1/4 (1)

<input type="checkbox"/> <a href="#">Build Your Own - 1/4" Shank Diameter</a>	1/4	
<input type="checkbox"/> <a href="#">Build Your Own - 5/16" Shank Diameter</a>	5/16	
<input type="checkbox"/> <a href="#">Build Your Own - 3/8" Shank Diameter</a>	3/8	
<input type="checkbox"/> <a href="#">Build Your Own - 1/2" Shank Diameter</a>	1/2	
<input type="checkbox"/> <a href="#">PL4-500</a>	1/4	1/2
<input type="checkbox"/> <a href="#">PL4-750</a>	1/4	3/4
<input type="checkbox"/> <a href="#">PL4-1000</a>	1/4	1
<input type="checkbox"/> <a href="#">PL4-1250</a>	1/4	1 1/4
<input type="checkbox"/> <a href="#">PL4-1500</a>	1/4	1 1/2
<input type="checkbox"/> <a href="#">PL5-1000</a>	5/16	1
<input type="checkbox"/> <a href="#">PL5-1250</a>	5/16	1 1/4
<input type="checkbox"/> <a href="#">PL5-1500</a>	5/16	1 1/2
<input type="checkbox"/> <a href="#">PL5-1750</a>	5/16	1 3/4
<input type="checkbox"/> <a href="#">PL5-2000</a>	5/16	2
<input type="checkbox"/> <a href="#">PL6-1000</a>	3/8	1
<input type="checkbox"/> <a href="#">PL6-1250</a>	3/8	1 1/4
<input type="checkbox"/> <a href="#">PL6-1500</a>	3/8	1 1/2
<input type="checkbox"/> <a href="#">PL6-1750</a>	3/8	1 3/4
<input type="checkbox"/> <a href="#">PL6-2000</a>	3/8	2
<input type="checkbox"/> <a href="#">PL6-2250</a>	3/8	2 1/4
<input type="checkbox"/> <a href="#">PL6-2500</a>	3/8	2 1/2
<input type="checkbox"/> <a href="#">PL8-1000</a>	1/2	1
<input type="checkbox"/> <a href="#">PL8-1500</a>	1/2	1 1/2
<input type="checkbox"/> <a href="#">PL8-1750</a>	1/2	1 3/4
<input type="checkbox"/> <a href="#">PL8-2000</a>	1/2	2
<input type="checkbox"/> <a href="#">PL8-2500</a>	1/2	2 1/2
<input type="checkbox"/> <a href="#">PL8-3000</a>	1/2	3
<input type="checkbox"/> <a href="#">PL8-3500</a>	1/2	3 1/2

## CONTACT US

Pivot Point Inc.  
 761 Industrial Lane  
 PO BOX 488  
 Hustisford, WI 53034  
 Toll Free (800) 222-2231  
 Ph (920) 349-3251

## INDUSTRIES SERVED

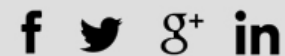
Military & Defense  
 Aerospace  
 Agricultural  
 Machine building  
 Automation  
 Transportation

## DISTRIBUTORS

For AUS/NZ, UK, France,  
 Spain & Belgium customers



## GET SOCIAL



## ABOUT US

Fax (920) 349-3253

Material Handling  
Medical  
Consumer Products  
& MORE!

WE ARE SEEKING ADDITIONAL  
WORLDWIDE DISTRIBUTORS

ISO CERTIFIED  
Version 9001:2008  
Certificate # C0236776-ISI

Copyright © 2016 Pivot Point, Inc. All Rights Reserved

[Technical Information](#) | [Patents](#) | [Employment](#) | [Terms and Conditions](#) | [Privacy](#)  
[Catalog Index](#) | [Site Map](#) | [Site: Marketing Metrics Corp](#)